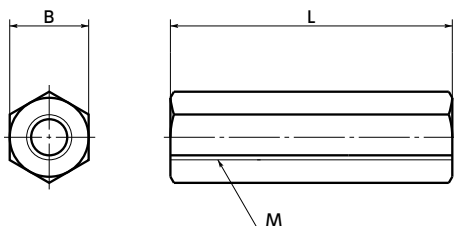




# SPE-HB Plastic Screws - Hex Posts - PEEK

Heat-resistance Chemical-proof



## Application

FPD production equipment / Semiconductor devices / Printed circuit board etching devices /  
Metallic surface treatment equipment and facilities / Chemical plants / Transformers /  
Electrical and electronic equipment / Hot water pumps /  
Chemical pumps

## Material/Finish



	<b>SPE-HB</b>
Main Body	PEEK (Polyether Ether Ketone) (Light Brown)
Heat Resistance Temperature*1	260°C

\*1 : This is the value for the resin material. The operating temperature of the product changes with performance conditions such as tightening torque.



- PEEK is a thermoplastic super engineering plastic superior in physical and chemical properties.
- Excellent chemical resistance. It remains almost unaffected by chemicals other than concentrated sulfuric acid, concentrated nitric acid, and concentrated hydrofluoric acid.
- With excellent heat resistance and water resistance, it retains strength at high temperatures.
- It features outstanding resistance to wear, shock, and fatigue.
- It also has high flame retardance which clears the UL 94 V-0 standard.
- The properties and precautions of plastic screws  
→ P.xxxx

Unit : mm

Part Number	M (Coarse)		L												B	Mass (g)	Qty per Pack
	Nominal of Thread 1	Pitch	2														
SPE-M3-HB	M3	0.5	4	5	6	8	10	12						6	0.14 - 0.41	5	
SPE-M4-HB	M4	0.7		5	6	8	10	12	15					7	0.22 - 0.66	5	
SPE-M5-HB	M5	0.8			6	8	10	12	15	18	20			8	0.32 - 1.1	5	
SPE-M6-HB	M6	1							15	18	20			10	1.2 - 1.6	5	
SPE-M8-HB	M8	1.25									20	25	30	13	2.6 - 3.9	5	

• When purchasing less volume than one full bag, a separate handling fee is charged. For details, see the Sold Separately Service.

## Part number specification

**SPE - M3 - 4 - HB**

Product Code



Product Code

Individual Sales → P.xxxx	Cleanroom Wash & Packaging → P.xxxx	Screw Length Adjustment → P.xxxx	Vibration Resistant → P.xxxx	Modification process for captive use → P.xxxx
Available / Add'l charge	Available / Add'l charge	Not Available	Not Available	Not Available