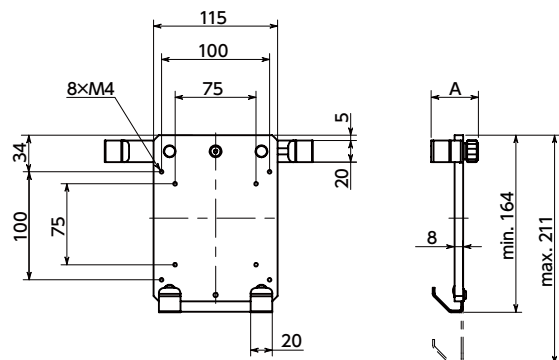
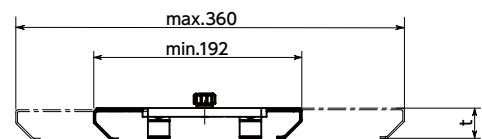
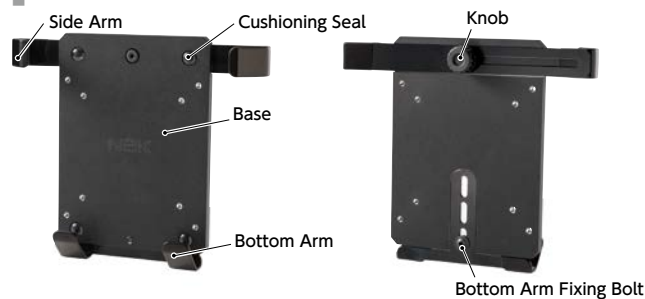
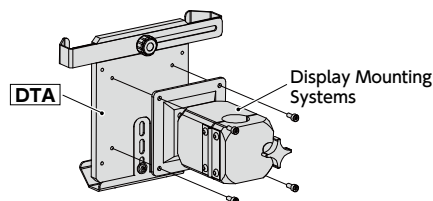


Structure



- A holder for mounting equipment and devices to tablet PCs.
- Robust design. It has excellent durability.
- Tablet PCs between 9 and 12 inches*1 can be mounted by adjusting the side arm and bottom arm.
- Arm interference with the various tablet PC ports can be avoided by adjusting the side arm and bottom arm position.
- Select the model number depending on the thickness of the tablet PC to be mounted.
 Tablet PC Thickness
 6 - 13 mm ——— **DTA-13-330-BK**
 13 - 20 mm ——— **DTA-20-330-BK**
- The nylon coating on the arm tip and the cushioning seal on the base prevent the tablet PC from being scratched.
- When mounting **DTA** to equipment and devices, display mounting systems should be used*2. Also, there are M4 screw holes at 75 mm x 75 mm and 100 mm x 100 mm positions to allow mounting with commercially available display mounting systems compliant with VESA standards.



- *1: 9-inch and 10-inch tablet PCs can only be installed horizontally.
- *2: Screws for mounting to display mounting systems are not supplied.

Material/Finish

	DTA
Base	Aluminum Alloy Electrostatic Coating
Side Arm	SPHC
Bottom Arm	Electrostatic Coating Nylon Coating (Tip Only)
Knob	Nylon 6
Knob Thread Part	S45C Trivalent Chromate Treatment
Bottom Arm Fixing Bolt	SCM435 Ferrosoferric Oxide Film
Cushioning Seal	Polyurethane



Application

Machine tool / Medical equipment / FPD production device / Semiconductor manufacturing device / Packing machine / Food machinery

Part Number ¹	Supports Tablet PCs			A	t	Max. Load Weight (kg)	Mass (g)
	Thickness min./max.	Width min./max.	Height min.				
DTA-13-330-BK	6 / 13	190 / 330	155	44	28	5	505
DTA-20-330-BK	13 / 20	190 / 330	155	51	35	5	513

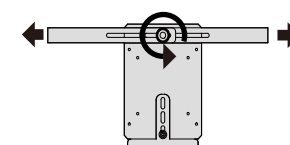
Unit : mm

- Combining with the display mounting systems below allows the tablet PC angle to be adjusted.

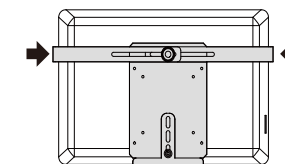
Display Mounting System Model Number	Angle Adjustment Direction
DFS DFSN → P.xxxx	Vertical or Horizontal
DFT → P.xxxx	Any Direction across 360° and Tablet PC Rotation
DFK → P.xxxx	Any Direction across 360° and Tablet PC Rotation
DFR → P.xxxx	Fixed

- Use M4 x 8 screws for mounting. Mounting screws are not supplied.
- Refer to each product page for details of display mounting system specifications.

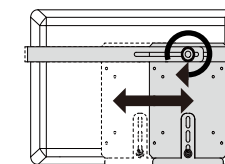
Tablet PC Mounting Method



- Loosen the rear knob to freely move the side arms.

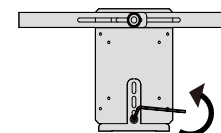


- Insert the tablet PC and push the side arms from both sides to secure it. Secure firmly so that the cushioning seal touches the tablet PC closely.

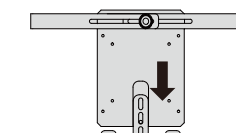


- Adjust the positions of the arms if they interfere with the tablet PC ports. Tighten the rear knob to complete mounting.*1

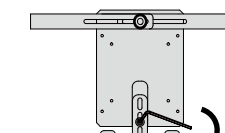
Height Adjustment Method



- Loosen the bottom arm fixing bolt with a hex wrench to remove.



- Adjust the bottom arm to the desired position.



- Firmly tighten the bottom arm fixing bolt with a hex wrench.*1

*1: The tablet PC may fall out of the holder if not tightened sufficiently.

- Part number specification

DTA-13-330-BK

