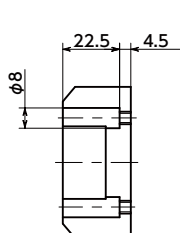
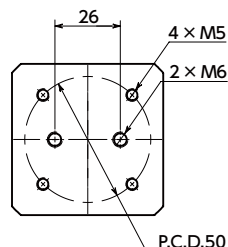
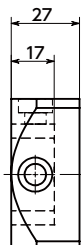
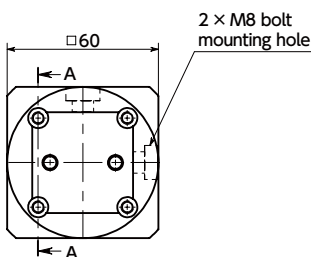


DAA For Aluminum Frame End Surface Mounting Bracket

Aluminum frame edge mount



Cross section diagram A-A



Material/Finish



DAA

A6063

Anodized

Main Body

- This part is for fixing the workpiece to □40 aluminum frame end surface.



- Angle hinge **DFS-H** (→ P.xxxx) **DFSN-H** (→ P.xxxx) **DKBR-H** (→ P.xxxx) have compatible mounting dimensions. You can freely combine them for use.

Application

Machine tool / Medical equipment / FPD production device / Semiconductor manufacturing device / Packing machine / Food machinery

Part Number ◀1	Max. Load Weight (kg)	Mass (g)
DAA-60-40	10	190

- Hex socket head cap low profile cap screws (M8 × 16 mm) × 2 pcs for fixing to the aluminum plate end surface are supplied.

Related Products

Angle hinge that can be used in assembly is available.

Clamp Lever Retention Type

DFS-H

Hex Nut Retention Type

DFSN-H

Rotation Restriction Type

DKBR-H



- Part number specification

DAA-60-40

