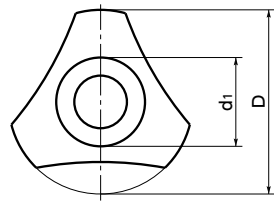
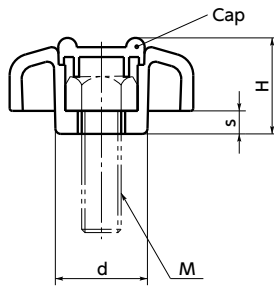
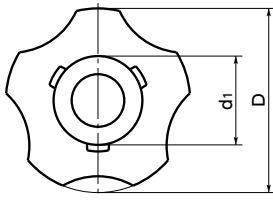


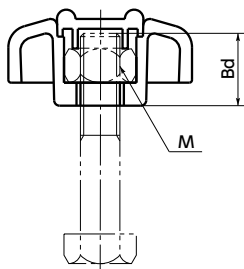
SS



SK



Hexagon Head Bolt → Male Screw Knob



Hexagon Nut → Female Screw Knob

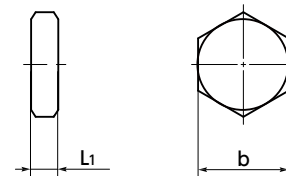
- Any commercially available hexagon head bolt and type-three hexagon nut can be used regardless of manufacturers and materials. You can make a knob easily by just inserting them.
- Especially for hexagon head bolts, any thread length can be selected.
- There are two types: triangular knob **SS** and pentagon knob **SK**.
- Two cap colors are white and yellow. They can be selected by the end symbol of the part number.

End Symbol ❶	Cap color
YW	Yellow
WH	White

- Assembling method
 - Fit the hex bolt or hex nut securely into the knob body hex socket.
 - Next, fit the cap. Fit in one of the three hooks.
 - Push in the remaining two hooks to finish the process.

For female screw knobs, pay attention to the male screw tightening dimensions (Bd dimension of the drawing). The cap may come off.

- Applicable Hex Head
Use hex socket bolts / hex nuts with head dimensions as indicated below.



- ⚠ Precautions for Use**
The height of hex head screws and hex nuts should not exceed L1 max.
It may not be possible to attach a cap.

SS Triangular Knob SK Pentagon Knob

Part Number ❶	D	M (Coarse)	H	s	d1	d	Bd	b	L1 max.	Mass (g)
SS-37	38	M6	16.5	3.4	15.2	16	14	10	4	5
SS-42	42	M8	19	4.5	18.2	20	15	13	5.5	10
SS-47	47	M10	23.2	5.9	21.8	24	18	17	7	15
SK-34	35.2	M6	16.5	3.2	15.2	16	14	10	4	5
SK-38	39.6	M8	19	4.5	18.2	20	15	13	5.5	10
SK-43	45	M10	23.2	6	21.8	24	18	17	7	15
SK-53	53	M12	22.3	4	24.8	27	14	19	8	20

Unit : mm

- Material/Finish



	SS	SK
knob	Nylon 6 (Black)	Nylon 6 (Black)
Cap	Nylon 6 (Various Color)	Nylon 6 (Various Color)

- Notice on Changed Material
To maintain stable supply, nylon 66 materials will be changed to nylon 6 sequentially from July 2021, as the stock runs out.
The material change will not affect the function of the products.
For details, refer to
https://nbk1560.com/news/2021/knob_zaishtuhenkou/.

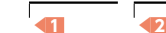
SK-WH



SS-YW

- Part number specification

SS-37-YW



Cleanroom Wash & Packaging → P.0000	Screw Combination → P.0000	Screw Length Adjustment → P.0000	Vibration Resistant → P.0000	Laser Marking → P.0000
Not Available	Not Available	Not Available	Not Available	Available / Add'l charge