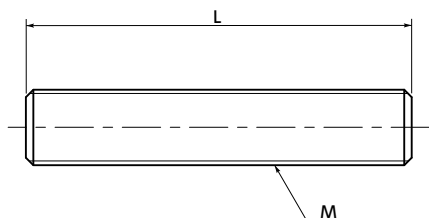




# SPA-Z Plastic Screws - Threaded Rods - RENY

High strength



- RENY is a thermoplastic engineering plastic with excellent tensile and bending strength.
- It is highly fatigue-resistant and has excellent creep and heat insulation properties.
- While it is nearly as strong as metal, its weight is approximately 1/5 of iron.
- The properties and precautions of plastic screws  
→ P.xxxx

## • Application

Heat insulation and dew condensation prevention of electric and electronic devices and refrigerating and freezing facilities / Weight saving of offshore instruments, plating facilities, automobiles, airplanes, aerospace devices, etc.

## • Material/Finish



	SPA-Z
Main Body	RENY*1 (50% Glass Fiber Reinforced Polyamide MXD6) (Ivory)
Heat Resistance Temperature*2	105°C

\*1 : RENY is a registered trademark of Mitsubishi Engineering-Plastics Corporation.

\*2 : This is the value for the resin material. The operating temperature of the product changes with performance conditions such as tightening torque.

Unit : mm

Part Number	M (Coarse)		L	Tension Rupture Load*1 (N)	Mass (g)
	Nominal of Thread	Pitch			
<b>SPA-M6-Z</b>	M6	1	300	3106	11
<b>SPA-M8-Z</b>	M8	1.25	300	5335	20
<b>SPA-M10-Z</b>	M10	1.5	300	7646	31
<b>SPA-M12-Z</b>	M12	1.75	300	7511	45
<b>SPA-M16-Z</b>	M16	2	300	19987	81

\*1 : Values in chart are for reference only. They are not guaranteed values.

## • Part number specification

### SPA-M6-Z



Individual Sales → P.xxxx	Cleanroom Wash & Packaging → P.xxxx	Screw Length Adjustment → P.xxxx	Vibration Resistant → P.xxxx	Modification process for captive use → P.xxxx
1 piece in 1 pack	Available / Add'l charge	Not Available	Not Available	Not Available