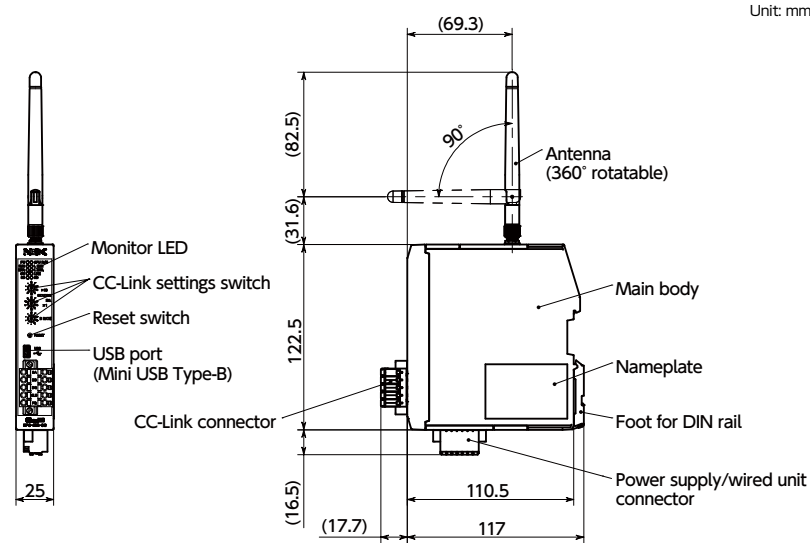


Unit: mm



● Performance

Power Source Voltage	24 VDC \pm 10% (External Power Supply) 5 VDC \pm 5% (USB Power Supply)
Current Consumption	30 mA
Host Connection Method	PLC: CC-Link Ver.2.00*1 PC: USB 2.0
Unit	Wireless
Connection Method	Wired
Wireless Reach Distance (Reference Value)	Indoors 60 m Outdoors 1200 m
Maximum No. of Connections	32 Units
Operating Environment	Temperature -5°C to 55°C (no freezing) Humidity 20% RH to 85% RH (no condensation)

*1 : **EPC-200-CC** is remote device station equipment compliant with CC-Link Ver. 2.00. It is not compliant with CC-Link Ver. 1.10.

● Material/Finish



	EPC-200-CC
Main Body	Polyamide (Light Gray)
DIN Rail Foot	Steel Trivalent Chromate Treatment

Part Number 1	Mass (g)
EPC-200-CC	131

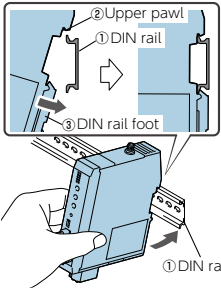
- **EPU-220** (\rightarrow P.xxxx) dedicated transceiver.
- With a PLC and CC-Link connection, up to 32 **EPU-220** units can be used with simultaneous automated control.
- Configuration of **EPC-200-CC** can be easily performed with a PC and dedicated software **EPU-COM**. **EPU-COM** is available free of charge. Please download from the NBK website. (<https://www.nbk1560.com/contact/positioning-unit-contents-form-software-dl/thanks/>)
- A PC connection USB cable (length: 1 m) is provided.
- Use a DIN rail foot to enable mounting to DIN rails with one touch.*1

- *1 : If operating wirelessly, avoid installing the control panel inside a metal housing. This will degrade wireless performance.
- CC-Link is a registered trademark of Mitsubishi Electric Corporation.

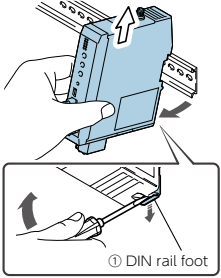
Precautions for Use

- For details on the connection and setting methods, please refer to the Instruction Manual. Be sure to read the "Safety Precautions" and "Precautions on Radio Wave and EMC" in the Instruction Manual before use.
The Instruction Manual can be downloaded from the NBK website.
- Countries and regions where this product is available are Japan, the US, Canada, China, Taiwan, South Korea, and Europe.
When used in combination with other products or with the customer's existing systems, equipment, etc., confirm independently that it is compliant with the standards, laws, and/or regulations of the country of use.

- Mounting
Hook the pawl at the top (②) of the transceiver to the top of the DIN rail (35 mm wide) (①).
Press the DIN rail foot (③) onto the DIN rail until it clicks.



- Removal
Use a flathead screwdriver or the like to pull down the DIN rail foot (①).
Lift and remove the transceiver. Or slide it on the DIN rail to remove it.



● Part number specification

EPC-200-CC

1

Available Area : Japan, the US, Canada, China, Taiwan, South Korea, and Europe