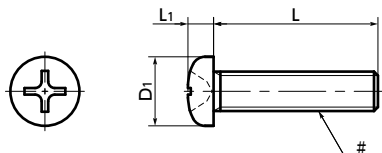


**SPE-P(INCH)**

Plastic Screws - Cross Recessed Pan Head Machine Screws - PEEK - Inch Thread

Heat-resistance Chemical-proof



## ● Material/Finish



	<b>SPE-P(INCH)</b>
Main Body	PEEK / Light Brown
Heat Resistance Temperature*1	260°C

\*1: This is the value for the resin material. The operating temperature of the product changes with performance conditions such as tightening torque.

**Precautions for Use**

Because a cumulative pitch difference is created when PEEK screws are manufactured, use these screws with nuts. If a nut is not used, use a 20 mm (approx. 0.79") or less fit with female thread.

## ● Inch screw type.

- PEEK is a thermoplastic super engineering plastic superior in physical and chemical properties.
- Excellent chemical resistance. It remains almost unaffected by chemicals other than concentrated sulfuric acid, concentrated nitric acid, and concentrated hydrofluoric acid.
- With excellent heat resistance and water resistance, it retains strength at high temperatures.
- It features outstanding resistance to wear, shock, and fatigue.
- It also has high flame retardance which clears the UL 94 V-0 standard.
- Plastic screw properties and precautions for use  
→ P.xxxx

## ● Application

FPD production equipment / Semiconductor devices / Printed circuit board etching devices / Metallic surface treatment equipment and facilities / Chemical plants / Transformers / Electrical and electronic equipment / Hot water pumps / Chemical pumps

Unit : inch

Part Number	#Nominal of Thread	L											D <sub>1</sub>	L <sub>1</sub>	Cross-recessed Socket Number	Tension*1 Rupture Load (N)	Torsional*1 Torque (N·m)	Mass (g)	Qty per Pack
SPE-#2-56-P	No.2-56UNC	3 / 16	1 / 4	5 / 16	3 / 8							0.167	0.058	1	181	0.1	0.036 - 0.048	10	
SPE-#4-40-P	No.4-40UNC		1 / 4	5 / 16	3 / 8	1 / 2	5 / 8	3 / 4	7 / 8	1		0.219	0.08	1	306	0.19	0.083 - 0.156	10	
SPE-#6-32-P	No.6-32UNC		1 / 4	5 / 16	3 / 8	1 / 2	5 / 8	3 / 4	7 / 8	1		0.27	0.097	2	459	0.33	0.11 - 0.30	10	
SPE-#8-32-P	No.8-32UNC		1 / 4	5 / 16	3 / 8	1 / 2	5 / 8	3 / 4	7 / 8	1		0.322	0.115	2	746	0.61	0.16 - 0.35	10	
SPE-#10-24-P	No.10-24UNC				3 / 8	1 / 2	5 / 8	3 / 4	7 / 8	1		0.373	0.133	2	919	0.84	0.47 - 0.65	10	
SPE-#10-32-P	No.10-32UNF				3 / 8	1 / 2	5 / 8	3 / 4	7 / 8	1		0.373	0.133	2	1090	0.95	0.59 - 0.77	10	
SPE-1 / 4-20	1/4-20UNC				3 / 8	1 / 2	5 / 8	3 / 4	7 / 8	1	1 - 1/4	0.492	0.175	3	1742	2.04	1.4 - 1.9	10	

\*1: Values in chart are for reference only. They are not guaranteed values. The recommended tightening torque is 50% of the torsional torque.

● When purchasing less volume than one full bag, a separate handling fee is charged. For details, see the Sold Separately Service.

## ● Related Products

PEEK hex nuts (inch thread)

**SPE-N(INCH)** are available.



## ● Part number specification

**SPE-#4-40-1/4-P**

**1** **2** **1**

Individual Sales → P.xxxx	Cleanroom Wash & Packaging → P.xxxx	Screw Length Adjustment → P.xxxx	Vibration Resistant → P.xxxx	Modification process for captive use → P.xxxx
Available / Add'l charge	Available / Add'l charge	Available / Add'l charge	Not Available	Please feel free to contact us