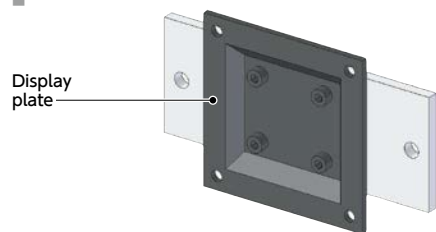


# DFR Display Mounting Systems - Fixed Type

Aluminum frame mount 
 wall/panel Mount 
 Aluminum frame edge mount 
 Pipe 
 Comply with VESA standard

## Structure



### Material/Finish



	DFR-AF	DFR-AA / DFR-PB
Display Plate	SPHC Electrostatic Coating	
Fixing Plate	SS400 Electrostatic Coating	-
Bracket	-	A6063 Anodized

- A type to fix the display completely.
- Three types of Mounting System for Display® are available for different types of mounting surfaces.



For aluminum frame /

For wall panel and sheet metal—**DFR-AF**

For aluminum frame end surface mounting—**DFR-AA**

For Round Pipe—**DFR-PB**

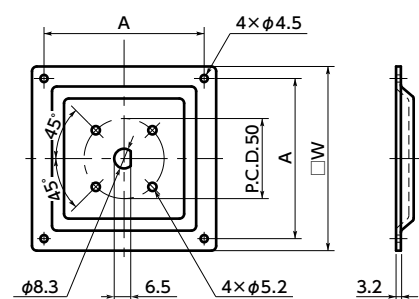
- The plate for display alone can be purchased.

### Application

Machine tool / Medical equipment / FPD production device / Semiconductor manufacturing device / Packing machine / Food machinery

- The plate for display alone can be purchased.

### DFR



Unit : mm

Part Number	A	W	Max. Load Weight (kg)	Mass (g)
DFR-75	75	90	10	220
DFR-100	100	115	10	320

### Part number specification

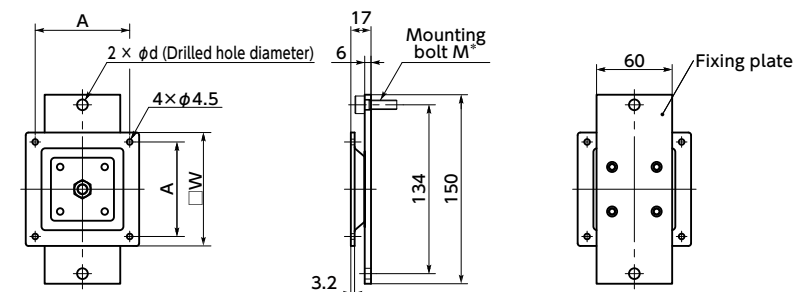
## DFR 75-AA-40

Product Code **1** **2** **3**

Example of part number: DFR-100-AF-M8 / DFR-75-PB-40

- For aluminum frame / For wall panel and sheet metal

### DFR-AF



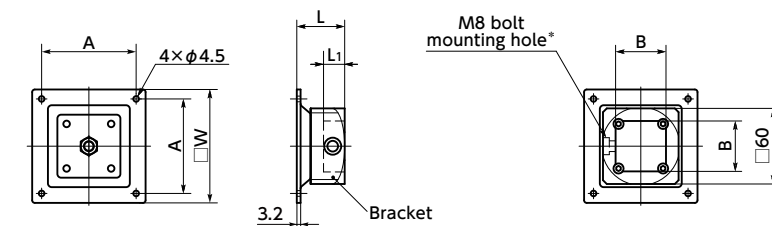
Unit : mm

Part Number	A <b>1</b>	M* <b>1</b> (d) <b>3</b>	W	Max. Load Weight (kg)	Mass (g)
DFR-75-AF-**	75	M4 (5) M5 (6) M6 (7) M8 (9)	90	10	630
DFR-100-AF-**	100	M4 (5) M5 (6) M6 (7) M8 (9)	115	10	735

\*1 : Mounting bolts are not supplied.

- For aluminum frame end surface mounting

### DFR-AA



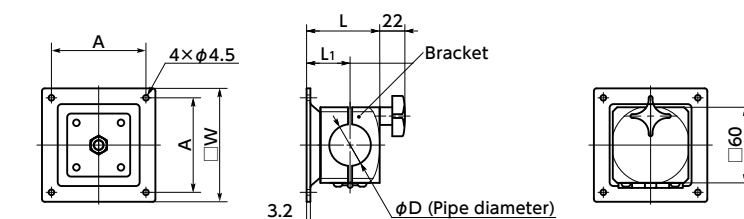
Unit : mm

Part Number	A <b>1</b>	B <b>3</b>	W	L <sub>1</sub>	L	Max. Load Weight (kg)	Mass (g)
DFR-75-AA-40	75	40	90	17	38	10	400
DFR-100-AA-40	100	40	115	17	38	10	505

\*1 : Hex socket low head bolts (M8 × 16 mm) are provided.

- For Round Pipe

### DFR-PB



Unit : mm

Part Number	A <b>1</b>	D <b>3</b>	W	L <sub>1</sub>	L	Max. Load Weight (kg)	Mass (g)		
DFR-75-PB-**	75	28	30	34	90	35	59	10	510 - 550
		40	42.7		90	39	67	10	500 - 530
DFR-100-PB-**	100	28	30	34	115	35	59	10	610 - 650
		40	42.7		115	39	67	10	600 - 630

- Fixing rubber sheet is attached.