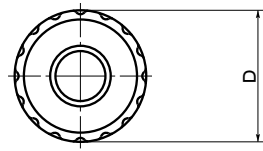
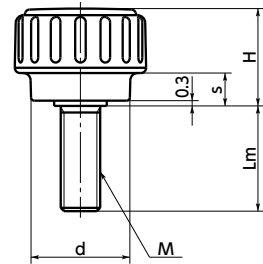


SUS Stainless steel



KDM
KDMS

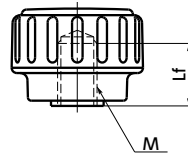


Material/Finish

	KDM	KDMS	KDF	KDFS
knob	Nylon 6 (Matte Black)	Nylon 6 (Various Color)	Nylon 6 (Matte Black)	Nylon 6 (Various Color)
Thread Part	SWCH10R Trivalent Chromate Treatment	SUSXM7	Made of Steel Trivalent Chromate Treatment	SUS303

RoHS

KDF
KDFS



GOOD DESIGN

- High quality. Human design.
- Dimple on the outer circumference enhances the operability.
- A rich variety of thread sizes from M3 to M8 are available.
- Types and thread part materials can be selected by a product code.

Product Code	Type	Thread Part Material
KDM	Male Screw	Made of Steel
KDMS	Male Screw	Made of Stainless Steel
KDF	Female Screw	Made of Steel
KDFS	Female Screw	Made of Stainless Steel

- **KDMS** **KDFS** (made of stainless steel) have two color variations. They can be selected by the end symbol of the part number.
 - End Symbol **BK** — Matte black
 - End Symbol **WH** — Matte white
- White is optimal for use with medical equipment.

Unit : mm

Dimensions

KDM KDMS Male Screw

Part Number Steel	Part Number Stainless steel	D	M (Coarse)		H	s	d	Mass (g)
			Nominal of Thread	Pitch				
KDM-16-M3	KDMS-16-M3	16	M3	0.5	11	2	11	3 - 4
KDM-16-M4	KDMS-16-M4	16	M4	0.7	11	2	11	3 - 4
KDM-16-M5	KDMS-16-M5	16	M5	0.8	11	2	11	5 - 6
KDM-20-M5	KDMS-20-M5	20	M5	0.8	14	4	15	5 - 8
KDM-20-M6	KDMS-20-M6	20	M6	1	14	4	15	8 - 11
KDM-25-M5	KDMS-25-M5	25	M5	0.8	18	6	19	8 - 10
KDM-25-M6	KDMS-25-M6	25	M6	1	18	6	19	9 - 13
KDM-25-M8	KDMS-25-M8	25	M8	1.25	18	6	19	16 - 20
KDM-32-M6	KDMS-32-M6	32	M6	1	18	6	24	17 - 19
KDM-32-M8	KDMS-32-M8	32	M8	1.25	18	6	24	23 - 32

KDF KDFS Female Screw

Unit : mm

Part Number Steel	Part Number Stainless steel	D	M (Coarse)		Lf	H	s	d	Mass (g)
			Nominal of Thread	Pitch					
KDF-16-M3	KDFS-16-M3	16	M3	0.5	5	11	2	11	4
KDF-16-M4	KDFS-16-M4	16	M4	0.7	5	11	2	11	4
KDF-16-M5	KDFS-16-M5	16	M5	0.8	5	11	2	11	4
KDF-20-M5	KDFS-20-M5	20	M5	0.8	6	14	4	15	7
KDF-20-M6	KDFS-20-M6	20	M6	1	6	14	4	15	6
KDF-25-M5	KDFS-25-M5	25	M5	0.8	9	18	6	19	11
KDF-25-M6	KDFS-25-M6	25	M6	1	9	18	6	19	10
KDF-32-M6	KDFS-32-M6	32	M6	1	8	18	6	24	18
KDF-32-M8	KDFS-32-M8	32	M8	1.25	8	18	6	24	17

Cleanroom Wash & Packaging → P.0000 Screw Combination → P.0000 Screw Length Adjustment → P.0000 Vibration Resistant → P.0000 Laser Marking → P.0000
 S.S. only/ Add'l charge Female screw only/ Add'l charge Male screw only/ Add'l charge Male screw only/ Add'l charge Available / Add'l charge

KDM Made of Stainless Steel

Part Number Male screw	Lm (mm)					
	6	10	16	20	25	40
KDM-16-M3	●	●	●			
KDM-16-M4	●	●	●			
KDM-16-M5		●	●	●		
KDM-20-M5		●	●	●		
KDM-20-M6		●	●	●	●	
KDM-25-M5		●	●	●	●	
KDM-25-M6		●	●	●	●	
KDM-25-M8			●	●	●	
KDM-32-M6			●	●	●	
KDM-32-M8			●	●	●	●

KDMS Made of Stainless Steel

Part Number Male screw	Lm (mm)					
	6	10	16	20	25	40
KDMS-16-M3	●	●	●			
KDMS-16-M4	●	●	●			
KDMS-16-M5		●	●	●		
KDMS-20-M5		●	●	●		
KDMS-20-M6		●	●	●	●	
KDMS-25-M5				●	●	
KDMS-25-M6			●	●	●	
KDMS-25-M8			●	●	●	
KDMS-32-M6			●	●	●	
KDMS-32-M8			●	●	●	●

Part number specification

KDMS-16-M3-10-WH

1 2 3 4 5

For male screw type, select screw length Lm from the sizes marked with ● in the table.
 For stainless steel, select the knob color.