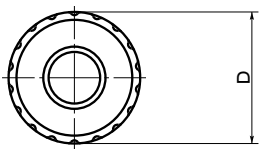
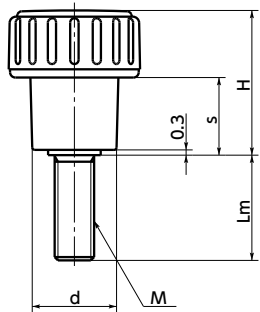


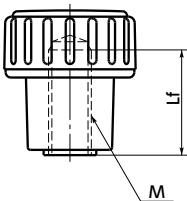
SUS Stainless steel



KLM
KLMS



KLF
KLFS



- High quality / high-precision. Soft impression of matte black.
- Convenient long size.
- Types and thread part materials can be selected by a product code.

Product Code ◀1	Type	Thread Part Material
KLM	Male Screw	Made of Steel
KLMS	Male Screw	Made of Stainless Steel
KLF	Female Screw	Made of Steel
KLFS	Female Screw	Made of Stainless Steel



• Material/Finish



	KLM	KLMS	KLF	KLFS
Knob	Nylon 6 (Matte Black)	Nylon 6 (Matte Black)	Nylon 6 (Matte Black)	Nylon 6 (Matte Black)
Thread Part	SWCH10R Trivalent Chromate Treatment	SUSXM7	Steel Trivalent Chromate Treatment	SUS303

Dimensions

KLM KLMS Male Screw

Unit : mm

Part Number Made of Steel	Part Number Made of Stainless Steel	D ◀2	M (Coarse)		H	s	d	Mass (g)
			Nominal of Thread ◀3	Pitch				
KLM-20-M5	KLMS-20-M5	20	M5	0.8	25	12	13	8 - 9
KLM-20-M6	KLMS-20-M6	20	M6	1	25	12	13	9 - 13
KLM-25-M5	KLMS-25-M5	25	M5	0.8	28	15	16	12 - 13
KLM-25-M6	KLMS-25-M6	25	M6	1	28	15	16	13 - 16
KLM-25-M8		25	M8	1.25	28	15	16	20 - 22
KLM-32-M6	KLMS-32-M6	32	M6	1	32	17	20	19 - 20
KLM-32-M8	KLMS-32-M8	32	M8	1.25	32	17	20	23 - 33
KLM-32-M10		32	M10	1.5	32	17	20	40 - 46

KLF KLFS Female Screw

Unit : mm

Part Number Made of Steel	Part Number Made of Stainless Steel	D ◀2	M (Coarse)		Lf	H	s	d	Mass (g)
			Nominal of Thread ◀3	Pitch					
KLF-20-M5		20	M5	0.8	10	25	12	13	10
KLF-20-M6	KLFS-20-M6	20	M6	1	14	25	12	13	9
KLF-25-M5		25	M5	0.8	15	28	15	16	20
KLF-25-M6		25	M6	1	15	28	15	16	19
KLF-25-M8	KLFS-25-M8	25	M8	1.25	18	28	15	16	15
KLF-32-M6		32	M6	1	18	32	17	20	41
KLF-32-M8		32	M8	1.25	18	32	17	20	38
KLF-32-M10	KLFS-32-M10	32	M10	1.5	20	32	17	20	33

KLM Made of Steel KLMS Made of Stainless Steel

Part Number Male Screw	Lm (mm) ◀4					
	10	16	20	25	30	40
KLM-20-M5	●	●	●			
KLM-20-M6	●	●	●		●	
KLM-25-M5			●	●		
KLM-25-M6		●	●	●	●	
KLM-25-M8			●	●		
KLM-32-M6			●	●		
KLM-32-M8		●	●	●	●	●
KLM-32-M10					●	●
KLMS-20-M5		●	●			
KLMS-20-M6	●	●	●			
KLMS-25-M5			●	●		
KLMS-25-M6		●	●	●		
KLMS-32-M6			●	●		
KLMS-32-M8		●	●	●		

• Part number specification

KLM- 32 - M6 - 25
◀1 ◀2 ◀3 ◀4

For male screw type, select ◀4 screw length Lm from the sizes marked with ● in the table.

Cleanroom Wash & Packaging → P.0000	Screw Combination → P.0000	Screw Length Adjustment → P.0000	Vibration Resistant → P.0000	Laser Marking → P.0000
S.S. only/ Add'l charge	Female screw only/ Add'l charge	Male screw only/ Add'l charge	Male screw only/ Add'l charge	Available / Add'l charge