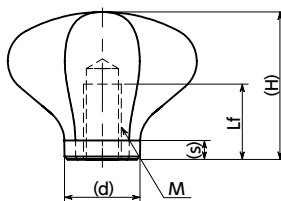
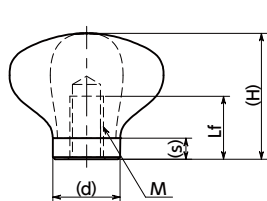
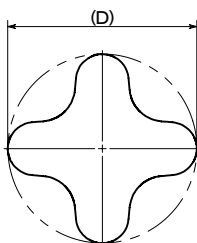
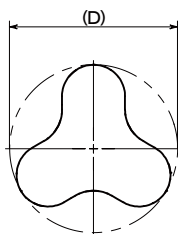


**KMDFS-32-M6-HP**  
**KMDFS-40-M8-HP**

**KMDFS-50-M10-HP**  
**KMDFS-50-M12-HP**



- Made of stainless steel superior in corrosion resistance.
- With an original design based on the 7 principles of universal design as well as ergonomics, force is easy to apply whether you hold it between your fingers or grasp with the palm of your hand, enabling stable operation. The shape is also designed for easy gripping with fingers, suitable for operation with work gloves on as well.
- The gently curved lines make the knob easy to wipe. With nowhere for water to puddle, it is also suitable for water washing.
- For applications requiring hygiene, such as food-related machinery, medical equipment, and chemical plants.

## • Material/Finish



	<b>KMDFS</b>
Main Body	SCS13 (Equivalent to SUS304) Polishing

Unit : mm

Part Number	D	M (Coarse)		Lf min.	H	s	d	Mass (g)
		Nominal of Thread	Pitch					
<b>KMDFS-32-M6-HP</b>	32	M6	1	12	25	5	12	46
<b>KMDFS-40-M8-HP</b>	40	M8	1.25	15	30	5	16	94
<b>KMDFS-50-M10-HP</b>	50	M10	1.5	18	39	5	20	195
<b>KMDFS-50-M12-HP</b>	50	M12	1.75	18	39	5	20	190

## • Part number specification

**KMDFS-32-M6-HP**



Cleanroom Wash & Packaging → P.xxxx	Screw Combination → P.xxxx	Screw Length Adjustment → P.xxxx	Vibration Resistant → P.xxxx	Laser Marking → P.xxxx
Please feel free to contact us	Please feel free to contact us	Not Available	Not Available	Not Available