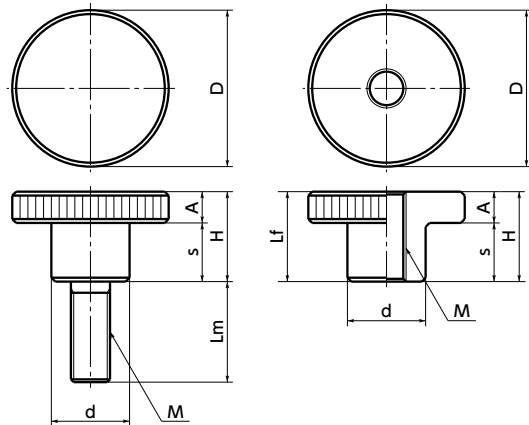


KNM
KNMS

KNF
KNFS



• **KNM** has a round-shaped thread tip to be distinguished from **KNMS**.

• Material/Finish

	KNM	KNF	KNMS / KNFS
Main Body	SWCH10R Buffing / Chrome Plating	SUM22L Buffing / Chrome Plating	SUS303*1

*1 : For **KNMS-36-M10**, it is SUS304.



Dimensions

KNM | KNMS Male Screw

Part Number Made of Steel	Part Number Made of Stainless Steel	D	M (Coarse)		H	s	A	d	Mass (g)
			Nominal of Thread	Pitch					
KNM-12-M3	KNMS-12-M3	12	M3	0.5	7.5	5	2.5	6	3 - 4
KNM-16-M4	KNMS-16-M4	16	M4	0.7	9.5	6	3.5	8	9 - 10
KNM-20-M5	KNMS-20-M5	20	M5	0.8	11.5	7.5	4	10	15 - 16
KNM-24-M6	KNMS-24-M6	24	M6	1	15	10	5	12	28 - 32
KNM-30-M8	KNMS-30-M8	30	M8	1.25	18	12	6	16	58 - 61
KNM-36-M10	KNMS-36-M10	36	M10	1.5	23	15	8	20	108 - 120

Unit : mm

KNF | KNFS Female Screw

Part Number Made of Steel	Part Number Made of Stainless Steel	D	M (Coarse)		Lf	H	s	A	d	Mass (g)
			Nominal of Thread	Pitch						
KNF-12-M3	KNFS-12-M3	12	M3	0.5	7.5	7.5	5	2.5	6	3
KNF-16-M4	KNFS-16-M4	16	M4	0.7	9.5	9.5	6	3.5	8	7
KNF-20-M5	KNFS-20-M5	20	M5	0.8	11.5	11.5	7.5	4	10	13
KNF-24-M6	KNFS-24-M6	24	M6	1	15	15	10	5	12	23
KNF-30-M8	KNFS-30-M8	30	M8	1.25	18	18	12	6	16	45
KNF-36-M10	KNFS-36-M10	36	M10	1.5	23	23	15	8	20	86

Unit : mm



KNM Made of Steel | KNMS Made of Stainless Steel

Part Number Male Screw	Lm (mm)						
	6	10	16	20	25	30	40
KNM-12-M3	●	●	●				
KNM-16-M4	●	●	●				
KNM-20-M5		●	●	●			
KNM-24-M6		●	●	●	●	●	
KNM-30-M8			●	●	●	●	
KNM-36-M10				●	●	●	●
KNMS-12-M3	●	●	●				
KNMS-16-M4	●	●	●				
KNMS-20-M5		●	●	●			
KNMS-24-M6		●	●	●	●	●	
KNMS-30-M8			●	●	●	●	
KNMS-36-M10				●	●	●	●

• Part number specification

KNM - 24 - M6 - 20

For male screw type, select screw length Lm from the sizes marked with ● in the table.