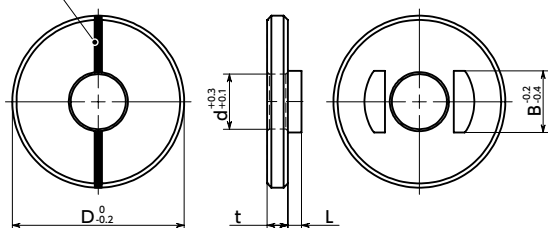


# SWAS-PPK Flat Washer for Slotted Holes



**SUS** Stainless steel

Pointer (laser printing)



● Material/Finish



	<b>SWAS- PPK</b>
Main Body	SUS303

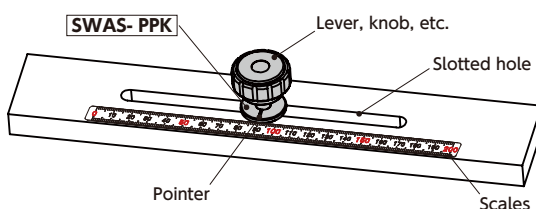


Precautions for Use

- Refer to the washer index as a guide.



- Washers suitable for positioning and fixing slide mechanisms using slotted holes.
- The projection on the washer seating surface prevents the washer from turning and the pointer on the top always points to the scale.



- Can be used with levers, knobs, etc.
- The outside diameter of the washer is about 3 times the screw diameter. This provides a sufficient seating surface for the tightening area.

Unit : mm

Part Number ◀1	D	d	t	L	B	Mass (g)
<b>SWAS-5-20-2-2-PPK</b>	20	5	2	2	5.5	5
<b>SWAS-6-20-2-2-PPK</b>	20	6	2	2	6.6	5
<b>SWAS-8-25-3-2-PPK</b>	25	8	3	2	9	11
<b>SWAS-10-30-3-2-PPK</b>	30	10	3	2	11	16

\* 1 : Set the width of the slotted hole to match the washer projection B dimension.

## ● Related Products

Various scales for slide mechanisms with flat washers for slotted holes are available.



Various levers with flat washers for slotted holes are available.



- Part number specification

**SWAS-5-20-2-2-PPK**



Scale Plate / Scale sticker Length Adjustment → P.xxxx

Not Available