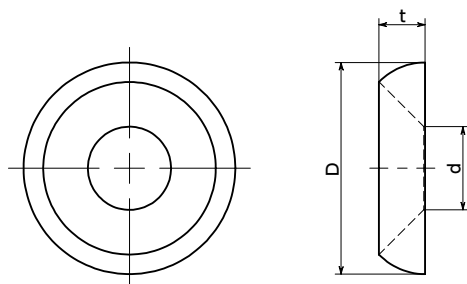




# SWAS-RW Rosette Washer

**SUS** Stainless steel



- Washer for Flat Head Screw. A Flat Head Screw can be used without countersinking.
- It decorates the mounting part beautifully by sleek spherical shape.

## ● Application

For decoration/prevent from getting caught

## ● Material/Finish



	SWAS-RW
Main body	SUS303

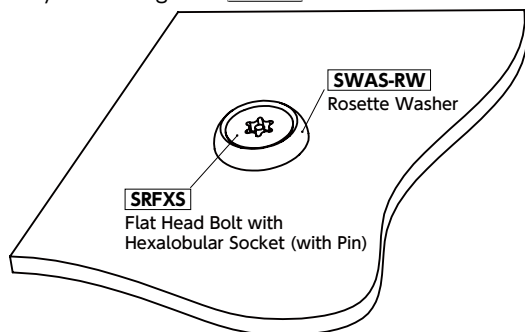
Unit : mm

Part Number	Nominal	D	d	t	Mass (g)	Qty per pack
<b>SWAS-3-RW</b>	3	10	3.5	2	0.74	10
<b>SWAS-4-RW</b>	4	12	4.5	2.5	1.1	10
<b>SWAS-5-RW</b>	5	14	5.5	3	1.9	10
<b>SWAS-6-RW</b>	6	16	6.5	3.5	3	10

- When purchasing less volume than one full bag, a separate handling fee is charged. For details, see the Sold Separately Service.

## ● Usage example

By combining with **SRFXS**.



## ● Part number specification

**SWAS-6-RW**



<b>1</b> Individual Sales → P. xxxxx	<b>2</b> Cleanroom Wash & Packaging → P. xxxxx	<b>3</b> Screw Length Adjustment → P. xxxxx	<b>4</b> Vibration Resistant → P. xxxxx	<b>5</b> Modification process for captive use → P. xxxxx
Available / Add'l charge	Available / Add'l charge	Not Available	Not Available	Not Available