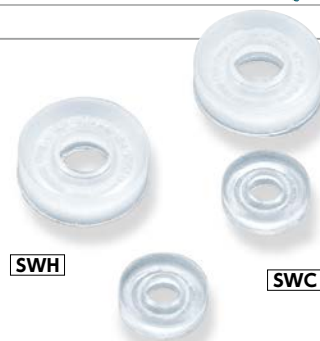
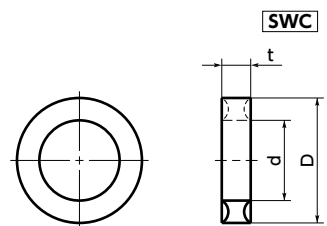
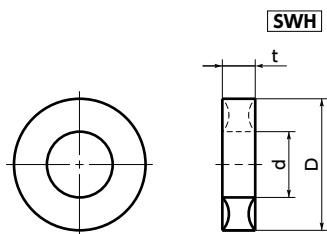




SWH/SWC Locking and Sealing Rings



- For sealing of the bolt tightening section.
- **SWH** — For hex head screws and hex nuts
- **SWC** — For socket head cap screws
- Max. Operating Temperature: -60 to 80°C

● Application

Thread Locking and Thread Sealing

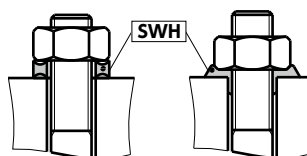
● Material/Finish



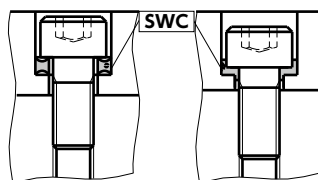
	SWH	SWC
Main Body	Polyamide (White)	Polyamide (White)

● Installation Method

- Before Tightening
- After Tightening



- Before Tightening
- After Tightening



SWH For Hex head screws and hex Nuts

Unit : mm

Part Number	Nominal	d	D	t	Mass (g)	Qty per pack
SWH-3	3	3.2	8	2.2	0.1	10
SWH-4	4	4.15	9.5	2.6	0.1	10
SWH-5	5	5.15	10.6	3	0.2	10
SWH-6	6	6.5	12.7	3.5	0.3	10
SWH-8	8	8.1	16.2	4	0.6	5
SWH-10	10	10.2	19.6	4.5	1	5
SWH-12	12	12.2	23.6	5	1.5	5

- When purchasing less volume than one full bag, a separate handling fee is charged. For details, see the Sold Separately Service.

SWC For Hex Socket Head Cap Screws

Unit : mm

Part Number	Nominal	d	D	t	Mass (g)	Qty per pack
SWC-4	4	4.1	7.7	2	0.1	10
SWC-5	5	5.15	9.8	3	0.2	10
SWC-6	6	6.5	10.5	2.5	0.2	10
SWC-8	8	8.1	14	3.3	0.3	10
SWC-10	10	10.2	17	3.8	0.5	10
SWC-12	12	12.2	19	4.4	0.7	5

- When purchasing less volume than one full bag, a separate handling fee is charged. For details, see the Sold Separately Service.

● Part number specification

SWC-10



1 Individual Sales → P. xxxxx	Cleanroom Wash & Packaging → P. xxxxx	Screw Length Adjustment → P. xxxxx	Vibration Resistant → P. xxxxx	Modification process for captive use → P. xxxxx
Available / Add'l charge	Not Available	Not Available	Not Available	Not Available